



Biannual mail **Fall 2020**

IT DEPARTMENT



OneDrive and Teams

All staff and students have access to the Microsoft Office 365 package, which includes Microsoft Teams and OneDrive.

Teams offers video calls, filesharing and a project management software, among other features.

With OneDrive you can store personal files and easily share them with collaborators.

[Read more](#)

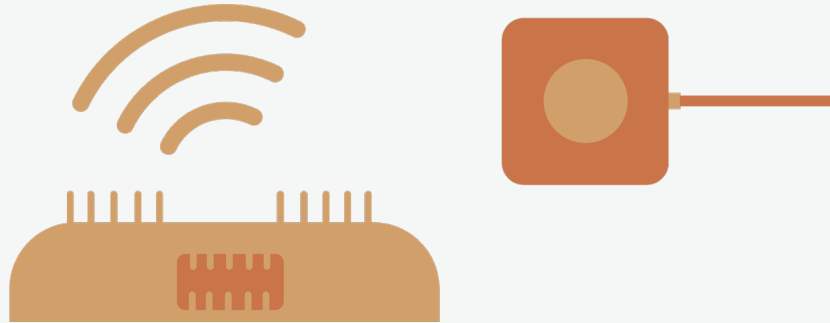


Multi-Factor Authentication

Multi-Factor Authentication (or MFA) allows you to keep your accounts safe.

All staff and students will eventually be required to have MFA.

[Read more](#)



Headless Service

Are you working on a project that requires you to connect a headless device to the ITU network?

You can now register your devices via the self-service system.

Staff can register up to 10 devices, students can register up to 3.

[Read more](#)



NVivo

NVivo is a qualitative data analysis software, which helps organize and analyze qualitative data like interviews, open-ended survey responses, social media etc.

[Visit NVivo](#)

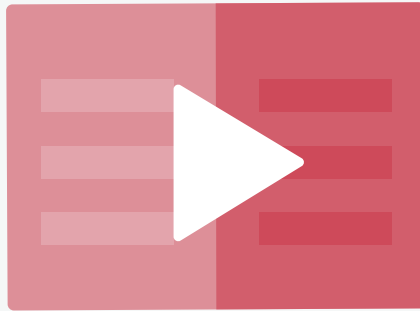


Overleaf

Overleaf is an online LaTeX editor with no installations needed. You can start a document from scratch or implement one of the free templates.

Using your ITU credentials you can freely use Overleaf's premium features. These include collaboration and tracking changes in your documents.

[Visit Overleaf](#)



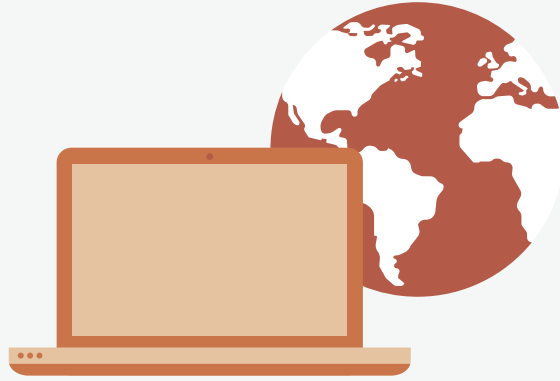
InLearning

With hundreds of videos on topics like programming, design, marketing and more, LinkedIn Learning is an excellent platform for expanding your knowledge.

All the learning material comes in video form. Whether you are looking for classes for beginners or experts, there is plenty of material to dig into.

The IT Department offers you a premium account, so your possibilities are endless. Happy learning!

[Get started](#)



FortiClient VPN

If you need access to articles that require an ITU network connection, you can download the FortiClient VPN and log in with your ITU credentials to gain access.

[Read more](#)

IT DEPARTMENT



Address

IT University of Copenhagen
Rued Langgaards Vej 7
DK-2300 Copenhagen S

Contact

Monday - Friday, 10 - 13
Wing 2C

it@itu.dk

